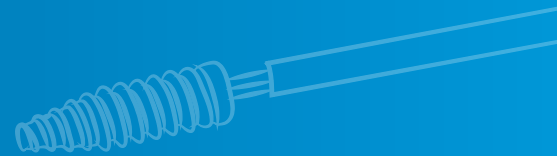
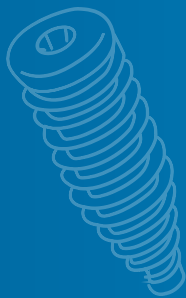
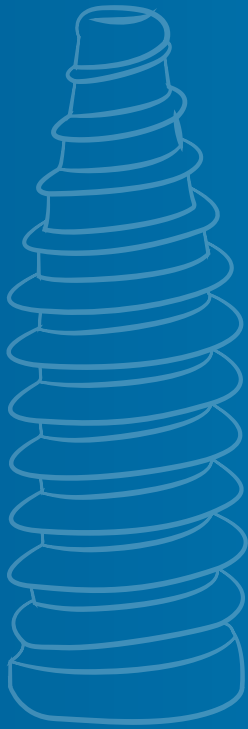




Biomatlante
Biologics Solutions

eXperts in bone regeneration



OsteotwinTM

Sports Surgery

Resorbable Interference Screw

Two expectations, one solution



Interference Screw

Two expectations, one solution

Osteotwin™ was designed to fulfill two core aims: provide appropriate mechanical properties necessary for ligament reconstruction whilst ensuring a regulated resorption and osteointegration to form architectural bone through hydrolysis.

Canulated Screw Design

The thread is specific to each screw diameter so as to systematically provide the maximum amount of contact between implant and bone.



Screw tip tailored to assist insertion into the bone tunnel

Auto stopper half head design

Lengths 25 and 30

- ✓ Atraumatic thread for optimal contact
- ✓ Non aggressive thread (to protect the ligament)
- ✓ Graduated tapered design to optimize torque

The conical tip is shorter to increase threaded screw contact



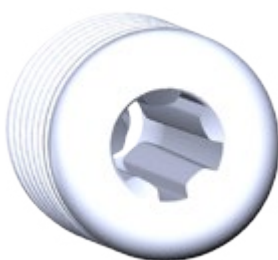
Headless to maximize the length of the screw

Length 20

Torx Screwdriver

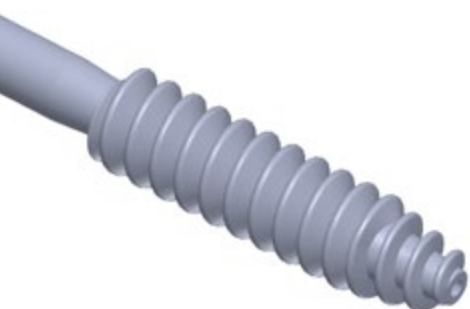


Pentalog Torx



Torx Screwdriver — optimal distribution of force
The mean failure torque for Osteotwin™ is 6 N.m, whereas other leading implants show a breakage rate of 5 and 5,3 N.m*.

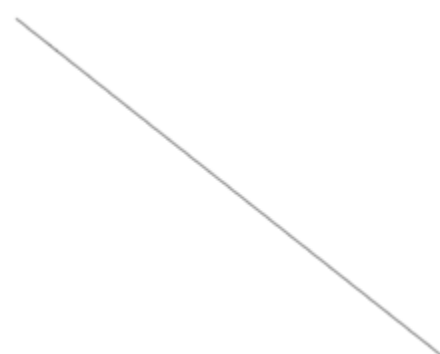
Instruments



Starter Tap



Tunnel Dilator



Guide Wire

Polylactic Range

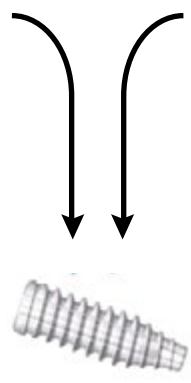
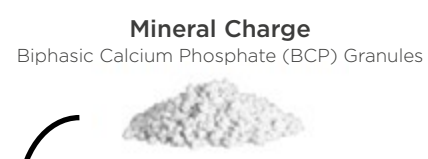
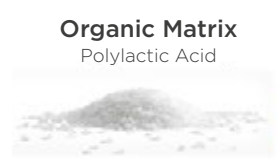


Made of PLDLLA, Osteotwin™ PolyLactic does not come with any of the complications associated with previous polymer screws. This material is widely becoming the gold standard for polymer only screws².

KEY FEATURES	KEY BENEFITS
Biocompatible	No rejection
Bio absorbable	Non obstructive, in event of revision
Metal-like mechanical properties	Necessary for indication requirements

Composite Range

75% PLDLLA & 25% BCP: the **ideal ratio** between the necessary mechanical resistance for the indication and the faculty to generate bone growth



- 75% PLDLLA**
- ✓ Better balance between degradation and mechanical strength than PLGA or PLA^{8, 9, 10}
 - ✓ L-Lactide provides greater mechanical resistance
 - ✓ DL-Lactide is amorphous (the crystallinity has been removed) which increases the resorption rate

- 25% MBCP™ Technology**
- ✓ Promotes the scaffold effect for osteoconduction and osteogenesis during the resorption of the polymer by hydrolysis⁴
 - ✓ For bioactive ionic exchange: TCP dissolution and bony crystal precipitation. Newly bioactive interface with bone cells
 - ✓ Regeneration of architectural bone



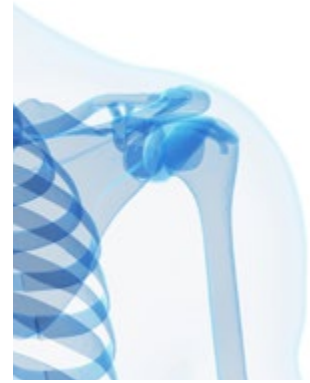
KEY FEATURES	KEY BENEFITS
Polymer & Ceramic	Bioactive ³
pH Neutral	Little or no inflammatory response
Positive clinical response	Architectural bone growth
MBCP™ Technology	Greater corticalization*

Indications

- ✓ Knee Cruciate ligament reconstruction: attachment of soft tissue grafts or bone-tendon-bone grafts to the tibia and/or femur
- ✓ Fixation within an osseous tunnel of the long head biceps tendon for long head biceps tenodeses



Knee ligament reconstruction



Tenodesis

Product References

Composite

Diameter	7 mm	8 mm	9 mm	10 mm
Length				
20 mm	11CPVI0720	11CPVI0820	11CPVI0920	-
25 mm	08CPVI0725	08CPVI0825	08CPVI0925	12CPVI1025
30 mm	08CPVI0730	08CPVI0830	08CPVI0930	08CPVI1030

Instruments

Screwdriver	08INTO001
Guide Wire	08INBR001F10
Tunnel Dilator Ø 07/08	08INCO001
Tunnel Dilator Ø 09/10	08INCO002
Starter Tap	11INTA001

Polylactic

Diameter	7 mm	8 mm	9 mm	10 mm
Length				
20 mm	13PVI0720	13PVI0820	13PVI0920	-
25 mm	13PVI0725	13PVI0825	13PVI0925	13PVI1025
30 mm	13PVI0730	13PVI0830	13PVI0930	13PVI1030

- ✓ Supplied sterile
- ✓ ISO 13485
- ! Consult instructions for use
- i Class III Medical Device
According to EU Directive EEC/93/42
- ✗ Certain products may not be approved for sale in all countries

- Daculsi, G., O. Laboux, et al. (2003). «Current state of the art of biphasic calcium phosphate bioceramics.» *Journal of Materials Science: Materials in Medicine* 14(3): 195-200.
- Middleton, J. C. et al.; *Biomaterials* 21 (23), «Synthetic biodegradable polymers as orthopedic devices», 2000 2335-2346.
- Suchenski, M., M. B. McCarthy, et al. (2010). «Material Properties and Composition of Soft-Tissue Fixation.» *The Journal of Arthroscopic and Related Surgery* 26(6): 821-831.
- Uzel, A. P., E. Seris, et al. (2013). «Preclinical and clinical cases of new absorbable composite interference screws in osteoarticular surgery.» *Key Engineering Materials* 529-530: 325-330.
- Kaeding, C., J. Farr, et al. (2005). «A Prospective Randomized Comparison of Bioabsorbable and Titanium Anterior Cruciate Ligament Interference Screws.» *The Journal of Arthroscopic and Related Surgery* 21(2): 147-151.
- Hunt, J. A. and J. T. Callaghan (2008). «Polymer-hydroxyapatite composite versus polymer interference screws in anterior cruciate ligament reconstruction in a large animal model.» *Knee Surgery, Sports Traumatology, Arthroscopy* 16(7): 655-660.
- Weiler, A., H. J. Windhagen, et al. (1998). «Biodegradable interference screw fixation exhibits pull-out force and stiffness similar to titanium screws.» *The American journal of sports medicine* 26(1): 119-126.
- Weiler, A., R. F. Hoffmann, et al. (1998). «Hamstring tendon fixation using interference screws: a biomechanical study in calf tibial bone.» *Arthroscopy: The Journal of Arthroscopic and Related Surgery* 14(1): 29-37.
- Hunt, J. A. and J. T. Callaghan (2008). «Polymer-hydroxyapatite composite versus polymer interference screws in anterior cruciate ligament reconstruction in a large animal model.» *Knee Surgery, Sports Traumatology, Arthroscopy* 16(7): 655-660.
- Black, J., (1988). «Does corrosion matter?» *The Journal of Bone and Joint Surgery*, 70-B(4): 517-520.
- Bauer, J., Turgay, E., et al. (2010). «Torsional stability of interference screws derived from bovine bone - a biomechanical study.» *BMC Musculoskeletal Disorders* 11: 82

* Data on files, Biomatlante

Manufacturer :
BIOMATLANTE
 Z.A. Les Quatre Nations
 5 rue Edouard Belin
 44360 Vigneux-de-Bretagne — France

www.biomatlante.com



Distributed by:

MBCP™ and Osteotwin™ are trademarks of Biomatlante